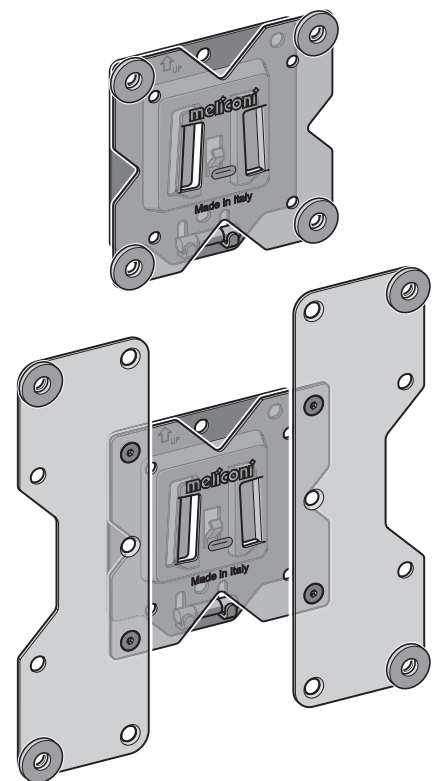




# SLIMSTYLE PLUS 100200 S



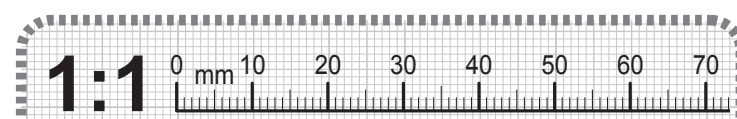
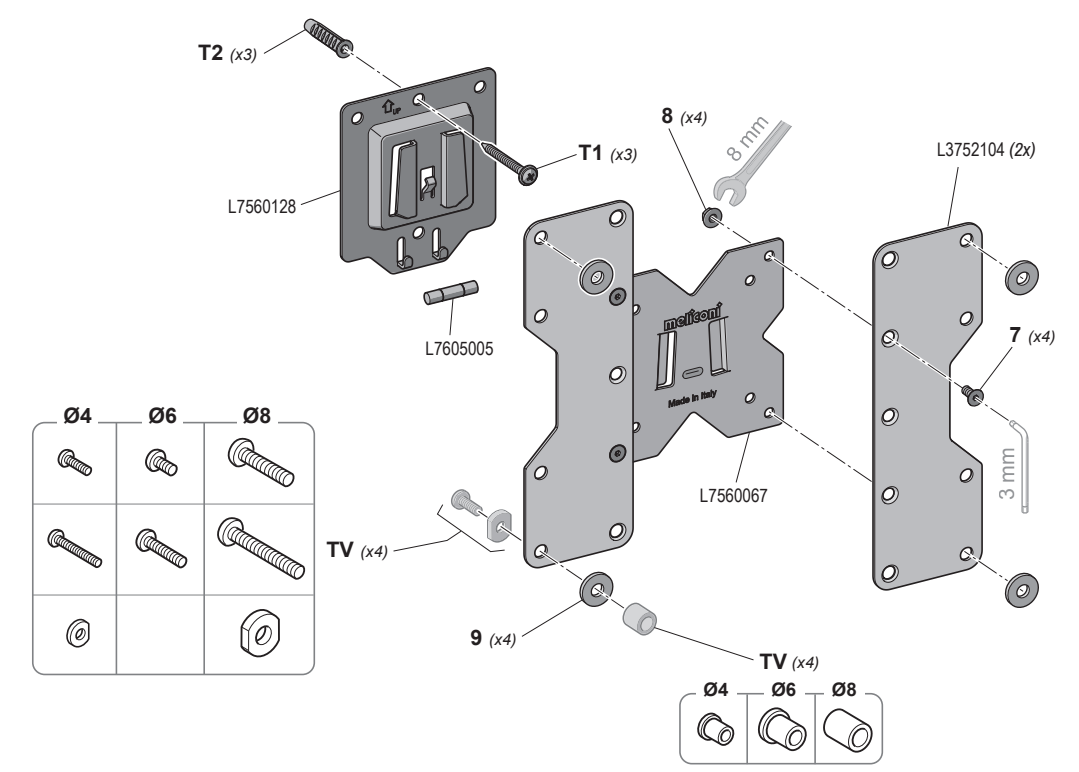
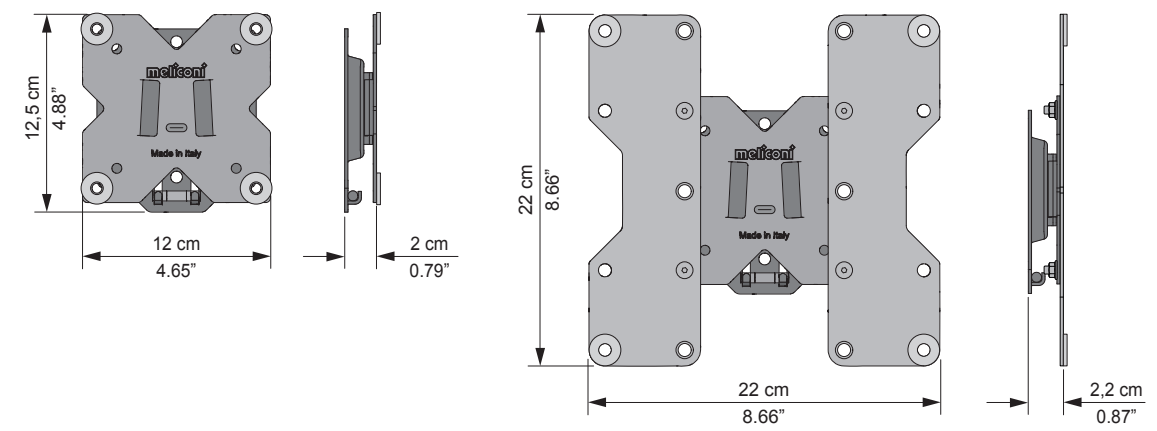
IT ISTRUZIONI DI MONTAGGIO  
 FR INSTRUCTIONS DE MONTAGE  
 EN MOUNTING INSTRUCTIONS  
 DE MONTAGEANLEITUNG  
 NL MONTAGEVOORSCHRIFT  
 ES GUÍA DE MONTAJE  
 PT INSTRUÇÕES DE MONTAGEM  
 EL ΟΔΗΓΙΕΣ ΣΥΝΑΡΜΟΛΟΓΗΣΗΣ  
 RU ИНСТРУКЦИИ ПО УСТАНОВКЕ  
 PL INSTRUKCJA MONTAŻU  
 CZ NÁVOD K MONTÁŽI  
 RO INSTRUCȚIUNI DE MONTARE  
 HU SZERELÉSI ÚTMUTATÓ  
 SE MONTERINGSANVISNINGAR  
 NO MONTERINGSINSTRUKSJONER  
 FI ASENNUSOHJEET

Meliconi S.p.A. - V. Minghetti, 10  
 40057 Cadrano di Granarolo E. (BO) Italy  
 www.meliconi.com e-mail: info@meliconi.com

**IT** Attrezzatura per montaggio **FR** Outillage pour le montage **EN** Assembly equipment **ES** Herramientas de montaje

**IT** Dati tecnici **FR** Caractéristiques techniques **EN** Technical data **ES** Datos técnicos

14" - 40" 36 - 102 cm	TV MAX 30 kg 66 lbs	100200 S 0,8 kg 1.76 lbs	VESA mm 75x75 mm 100x100 mm 100x200	mm 200x100 mm 200x200
--------------------------	------------------------------	--------------------------------	--	--------------------------



**1:1**

**T1 (x3) T2 (x3)**  
 Ø8 L7950007  
 Ø5 x 50 L7950248

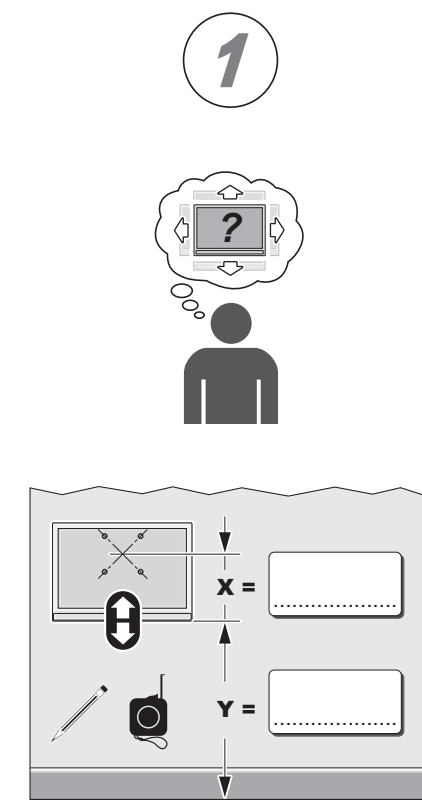
**TV (x4)**  
 Ø8 x 50 L7950319  
 Ø8 x 40 L7950318  
 Ø6 x 30 L7950139  
 Ø6 x 16 L7950244  
 Ø4 x 30 L7950199  
 Ø4 x 16 L7950231

**TV (x4)**  
 Ø4 x 15 L4459513  
 Ø6 x 15 L4459513  
 Ø8 x 15 L4459513-8

**7 (x4)** Ø5 x 12 L7950247  
**8 (x4)** Ø5 L3802010

**9 (x4)** Ø8 x 20 x 2 L4500031

Other parts: Ø22 x 8.3 x 3.2 L7001019, Ø4 x 12 x 2.8 L7001024



**2**

UP (x3)  
 X+Y-6,5 cm (2.56")

**3**

Ø 8 mm  
 60 mm (2.36")  
 max 12 mm (0.5")

**4**

T2 (x3) (x3)

**2**

UP (x3)  
 X+Y-6,5 cm (2.56")

**3**

Ø 2,5 mm  
 60 mm (2.36")  
 max 12 mm (0.5")

**4**

T1 (x2) (x2)  
 T2 (x2)

