

IT ISTRUZIONI DI MONTAGGIO
 FR INSTRUCTIONS DE MONTAGE
 EN MOUNTING INSTRUCTIONS
 DE MONTAGEANLEITUNG
 NL MONTAGE-OMSCHRIJF
 ES GUIA DE MONTAJE
 PT INSTRUÇÕES DE MONTAGEM
 PL INSTRUKCJA MONTAŻU
 CZ NÁVOD K MONTÁŽI
 RO INSTRUCȚIUNI DE MONTARE
 HU SZERELÉSI ÚTMUTATÓ
 FI ASENNUSOHJEET
 SK NAVOD NA MONTÁŽ
 SL NAVODILAZA MONTAŽO
 MK INSTRUKCIJA ZA MONTAŽA
 SQ UDHËZIME PËR MONTIMIN

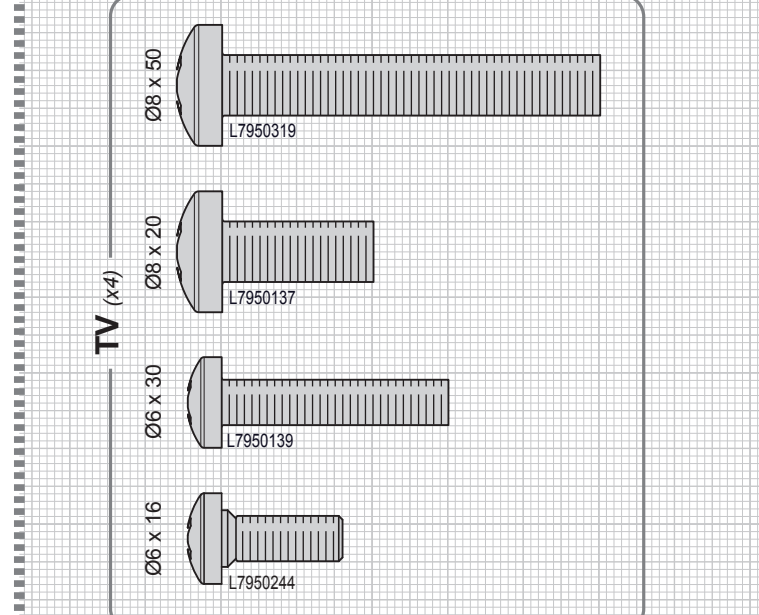
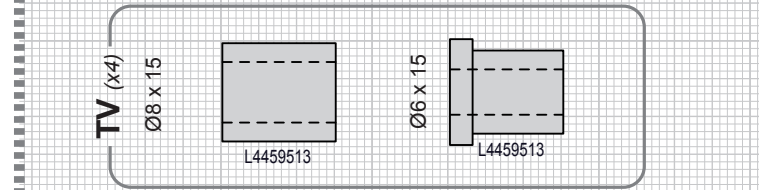
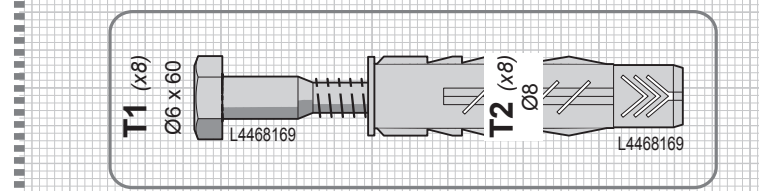
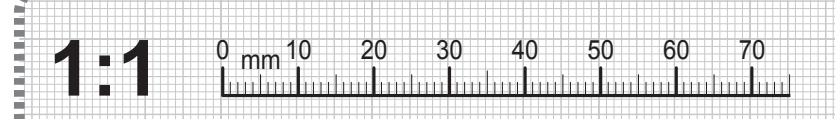


Qualität zertifiziert
Certified quality



Recycle at
the designated
recycling point.
<https://www.meliconi.com>

Meliconi S.p.A. - V. Minghetti, 10
40057 Cadriano di Granarolo E. (BO) Italy
www.meliconi.com e-mail: info@meliconi.com



Attrezzatura per montaggio / Outils d'assemblage / Assembly equipment / Herramientas de montaje

Dati tecnici / Caractéristiques techniques / Technical data / Datos técnicos

900F
 65° - 120°
 3,3 kg
 VESA Max 900 mm X
 Max 600 mm Y

IT Mur in mattoni pieni o cemento armato
 FR Mur en briques pleines ou en béton armé
 EN Solid bricks or reinforced concrete wall
 ES Pared de ladrillos comunes o cemento armado

IT Cartongesso
 FR Plaque de plâtre
 EN Plasterboard
 ES Placas de yeso

900 F
 A > 100 kg
 B > 50 kg

TV (x4) Ø6 x Ø8
 TV (x4) Ø6 x Ø8

L892031 (x2)
 L760505
 L360709
 L445932 (x2)
 L450044 (x4)
 T2 (x8)
 T1 (x8)

1. (x2)

2. TV (x4) Ø6-Ø8
 TV (x4) Ø6-Ø8
 TV (x4) Ø6-Ø8
 TV (x4) Ø6-Ø8

3. a. X cm
 b. Y cm
 c. X+Y cm **

4. IT Mur in mattoni pieni o cemento armato
 FR Mur en briques pleines ou en béton armé
 EN Solid bricks or reinforced concrete wall
 ES Pared de ladrillos comunes o cemento armado

IT Cartongesso
 FR Plaque de plâtre
 EN Plasterboard
 ES Placas de yeso

5. IT Mur in mattoni pieni o cemento armato
 FR Mur en briques pleines ou en béton armé
 EN Solid bricks or reinforced concrete wall
 ES Pared de ladrillos comunes o cemento armado

6. 70 mm (2.8")
 max 12 mm (0.5")
 Ø 8 mm

7. T2 (x4)

8. T1 (x4)
 10 mm

9. a, b, c, d. CLICK!

10. T1 (x8) Ø6 x Ø8
 L445919
 T2 (x8) Ø6 x Ø8
 L445919

11. a, b

12. 70 mm (2.8")
 max 12 mm (0.5")
 Ø 8 mm

13. T2 (x4)

14. a, b, c, d. CLICK!

15. T1 (x4)
 10 mm

16. IT Mur in mattoni pieni o cemento armato
 FR Mur en briques pleines ou en béton armé
 EN Solid bricks or reinforced concrete wall
 ES Pared de ladrillos comunes o cemento armado

17. X+Y **

18. 70 mm (2.8")
 max 12 mm (0.5")
 Ø 8 mm

19. T2 (x8)

20. T1 (x8)
 10 mm

